

AM

8:00 – 9:00 Registration & reception
 9:00 – 9:15 Opening & welcome

Invited Lecture

9:15 – 9:45 **Marie Claesson, Tor Broström**
 Eight years of Energy Efficiency in Historic Buildings

1st Session

Boundaries & obstacles

9:45 – 10:05 **Nelson Brito**
 Mismatch, exclusion and inclusion - threats / opportunities for Historic Buildings in the current Energy Efficiency paradigm

10:05 – 10:25 **Tineke Van der Schoor**
 Valuation of medieval churches, towards an integration of expert's and laypersons' views

10:25 – 10:45 **Gustaf Leijonhufvud**
 Standardizing the Indoor Climate in Swedish Churches: Opportunities, Challenges and Ways Forward

10:45 – 11:15 **Coffee break**

2nd Session

Investigation, Design & Feasibility (I)

11:15 – 11:35 **Camilla Colla**
 Integrated diagnostic approach for the structural and energetic evaluation of historic buildings

11:35 – 11:55 **Elodie Heberle**
 Guidance for finding a sustainable balance between energy efficiency, comfort, moisture damage and cultural heritage value in historic building

11:55 – 12:15 **Aitziber Egusquiza**
 Supporting historic districts energy retrofitting through a comprehensive multiscale framework and its implementation in the EFFESUS DSS

12:15 – 12:35 **Fredrik Berg**
 Using the life cycle analysis approach for decision and policy support concerning built cultural heritage: Norwegian case studies

12:35 – 13:35 **Lunch break**

PM

Invited Lecture

13:35 – 14:05 **Alexandra Troi**
 Comfort and energy efficiency in historic buildings – the 3ENCULT experience

3rd Session

Investigation, Design & Feasibility (II)

14:05 – 14:25 **Richard Atkins**
 Integrating conservation aspects into energy-related retrofit assessments for 20th century historic buildings: Canongate Housing

14:25 – 14:45 **Joaquim Flores**
 The investigation of energy efficiency in Oporto World Heritage Site traditional buildings

14:45 – 15:05 **Giovanna Franco**
 Eco-efficiency in a UNESCO World Heritage site: safeguard, innovation and compatibility

15:05 – 15:25 **Stefan Bichlmair**
 Comparison of Different Systems for Internal Wall Insulation with Reversible Application for Historic Buildings

15:25 – 15:55 **Coffee break**

4th Session

Using and improving energy models

15:55 – 16:15 **Arkadiusz Kupczak**
 Modelling impact of collections on indoor climate and energy consumption in museums, libraries and archives

16:15 – 16:35 **Marco Giuliani**
 A new Tool for accurate Energy and Comfort Assessment of Historic Building

5th Session

Education & training

16:35 – 16:55 **Moses Jenkins**
 Historic Scotland's Approach to Training and Education for Energy Efficiency in Traditional Buildings

16:55 – 17:15 **Andrew Richards**
 Cornwall Council Skills training and Energy Saving Initiatives

AM

8:00 – 9:00 Registration & reception
 9:00 – 9:15 Opening & welcome

Invited Lecture

9:15 – 9:45 **Magnus Wessberg**
 An evaluation of three different methods for energy efficient indoor climate control in Skokloster castle

1st Session

Interventions: materials, systems & indoor climate (I)

9:45 – 10:05 **Rick Kramer**
 Energy impact of ASHRAE's museum climate classes: full scale dynamic measurements in a state-of-the-art museum in Amsterdam

10:05 – 10:25 **Ralf Kilian**
 Evaluation of different wall heating systems in historic monuments – Aspects of Energy and Conservation

10:25 – 10:45 **Nigel Isaacs**
 Domestic Hot Water Systems – constant with changes

10:45 – 11:15 Coffee break

2nd Session

Interventions: materials, systems & indoor climate (II)

11:15 – 11:35 **Stavroula Thravalou**
 The impact of architectural design interventions and occupant interactions on thermal comfort in built vernacular heritage

11:35 – 11:55 **Roger Curtis**
 Fabric Improvements for energy efficiency in historic and traditional buildings – keeping it simple

11:55 – 12:15 **Evy Vereecken**
 Capillary active interior insulation: a discussion

12:15 – 12:35 **Poul Klenz Larsen**
 A lime based mortar for thermal insulation of medieval church vaults

12:35 – 13:35 Lunch break

PM

Invited Lecture

13:35 – 14:05 **Caroline Rye**
 The role of monitoring and feedback in the refurbishment of traditional buildings: New Court, Trinity College, Cambridge

3rd Session

Monitoring & feedback

14:05 – 14:25 **Janice Foster**
 Building Performance Evaluation - A design approach for refurbishment of a small traditional building in Scotland

14:25 – 14:45 **Aranzazu Galan Gonzalez**
 Understanding our heritage: Monitoring of energy and environmental performance of traditional terrace houses of Northern England

14:45 – 15:05 **Julien Borderon**
 On-site assessment of hygrothermal performance of historic wall before and after retrofitting with insulation

15:05 – 15:25 **Camilla Colla**
 Thermal behaviour and comfort of a building pre- and post-intervention: the case of the Engineering School of Bej r

15:25 – 15:55 Coffee break

4th Session

Governance

15:55 – 16:15 **Elena Lucchi**
 Assessing environmental sustainability and energy efficiency of historic buildings: a new certification tool for de-livering cultural values in renovation processes

16:15 – 16:35 **Eneko Jokin Uranga**
 The impact of the energy efficiency regulation on residential built heritage. The case of gros district in the city of San Sebastian

16:35 – 16:55 **Anna Donarelli**
 Energy performance certificates and historic buildings: a method to encourage user participation and sustainability in the refurbishment process

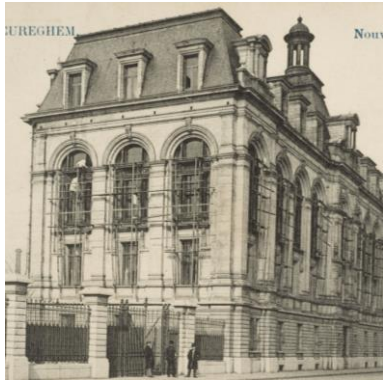
16:55 – 17:15 Closing session

Option 1: Veterinary School / Wiels

9:00	Meet us at the Royal Library
9:15	Departure for the Veterinary School
9:45	Arrival at the Veterinary School
10:30	Gathering for the second visit
10:45	Departure for the second visit: Wiels
11:00	Arrival at Wiels
11:45	Gathering
12:00	Departure for the Royal Library
12:30	Arrival at the Royal Library

Option 2: Ieder Zijn Huis / VUB

8:45	Meet us at the Royal Library
9:00	Departure for Ieder Zijn Huis
9:45	Arrival at Ieder Zijn Huis
10:30	Gathering for the second visit
10:45	Departure for the second visit: VUB
11:00	Arrival at the VUB
12:00	Gathering
12:15	Departure for the Royal Library
12:45	Arrival at the Royal Library



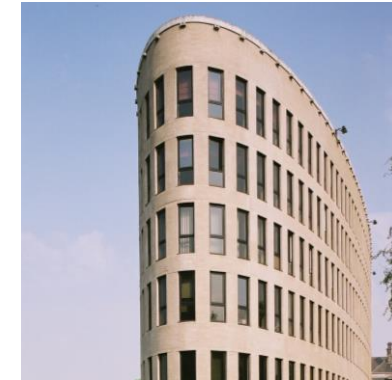
The Veterinary School



Wiels



Ieder Zijn Huis



VUB

Nelson Brito and Rute Castela

Deep assessment” before “deep renovation”: saving money, time and Cultural Values

Petra Eriksson, Aitziber Eqsquiza and Tor Broström

The potential for implementing a decision support system for energy efficiency in the historic district of Visby

Joel Gustafsson, Caroline Rye and Oliver Smith

Retrofit Internal Insulation at New Court, Trinity College, Cambridge: Options, Issues and Resolution Through Material Sampling and Modelling

Sonja Jurošević and Ragna Grytli

Energy efficiency retrofit of historic buildings: concepts, approaches and interventions

Giovanni Litti and Amaryllis Audenaert

Representativeness of indoor climate monitoring for the target microclimate definition in museums

Oliver Smith, Joel Gustafsson and Caroline Rye

Balancing the competing demands of heritage and sustainability, the benefits and risks involved in sustainable retrofit: New Court, Trinity College, Cambridge

Maarten Vieveen and Tineke van der Schoor

Integral design method Energy efficient Restoration